

OSStaple™

A Part of the Patented OSSforce™ Fixation System*

trust your fixation

The one & only controllable shape memory bone fixation system.*

Easy, fast and reproducible results.

Surgeon-controlled implant activation.

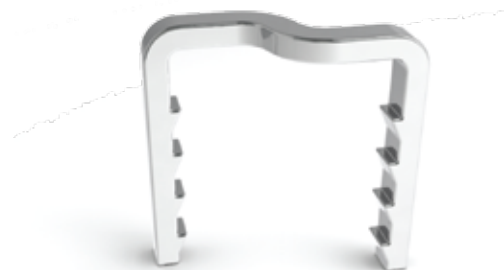
Long-term continuous compression to optimize stability and healing.

Entire fusion interface available for healing.

Stronger than 316L stainless steel when activated.

Smooth and barbed (BOSS) versions available.

*U.S. Patent Number 7,240,677.
Additional patents pending.



BME
Changing the Shape
of Orthopaedics

OSStaple™

The BME OSStaple™ and Barbed OSStaple™ (BOSS) are part of the most advanced orthopaedic shape memory fixation system available. These extraordinary implants not only compresses bone at the time of surgery, but continue to provide long-term active reduction of bone fragments to assist in bone healing.

The cornerstone of this system is the patented OSSforce™ 2 Implant Controller, BME's bipolar electrical device that safely activates the OSStaple™ causing the implant to change shape and compress bone. The unique OSSforce™ 2 Implant Controller enables surgeons to control the timing of implant activation, the amount of compressive force the implant applies to bone, and the rate at which that compression occurs.

With over 70,000 successful implantations, the gold-standard OSStaple™ is fixation you can trust.

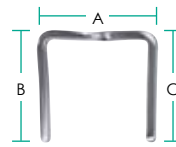
Common Foot Procedures:

- Hallux IPJ Fusion
- 1st MPJ Fusion
- Akin Osteotomy
- Chevron Osteotomy
- 1st Metatarsal Cuneiform Fusion
- Lisfranc Fusion
- Triple Arthrodesis
- Evans & Dwyer Osteotomies

Common Hand & Wrist Procedures:

- Intercarpal Fusions
- CMC Fusion
- PIP & DIP Fusions

OSStaple™ Sizing Chart



Wire Size*	Catalog No. (Smooth)	Catalog No. (Barbed)	A*	B*	C*
1.2 x 1.2	OS-0705 W1.2		7	5	5
	OS-0907 W1.2	430-9109	9	7	7
1.5 x 1.5	OS-0705 W1.5		7	5	5
	OS-0907 W1.5	440-9109	9	7	7
	OS-1108 W1.5	440-9111	11	8	8
	OS-1110 W1.5	440-9211	11	10	10
	OS-1310 W1.5	440-9113	13	10	10
	OS-1512 W1.5	440-9115	15	12	12
	OS-111513 W1.5		11	15	13
	OS-111715 W1.5		11	17	15
2 x 2	OS-111917 W1.5		11	19	17
	OS-1512 W2	450-9115	15	12	12
	OS-1518 W2	450-9215	15	18	18
	OS-181815 W2	550-9118	18	18	15
2 x 3	OS-2020 W2	450-9120	20	20	20
	OS-2020 W2x3	460-9120	20	20	20
	OS-2522 W2x3		25	22	22
	OS-3030 W2x3		30	30	30

*All sizes in millimeters.
Additional sizes and shapes available from BME.

The Patented OSSforce™ Fixation System†:



Barbed OSStaple™



OSSforce 2
IMPLANT CONTROLLER



Instrumentation

also available:



OSSArc™ Metaphyseal Compression Staple

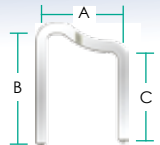
The exclusive OSSArc™ allows the surgeon to maintain the legs of the implant parallel to the fusion line while the back conforms to the sloping surfaces of the metaphyseal anatomy or uneven bony surfaces.



Akin Osteotomies

Jones Fractures

OSSArc™ Sizing Chart



Wire Size*	Catalog No.	A*	B*	C*
1.5	540-5111	11	15	12

*All sizes in millimeters.
Additional sizes and shapes available from BME.



A108-076 (Rev B)



©2010 BioMedical Enterprises, Inc.
All rights reserved.
OSSforce and OSStaple are trademarks of BioMedical Enterprises, Inc.



BioMedical Enterprises, Inc.
14785 Omicron Dr., Ste. 205 • San Antonio, Texas 78245
Phone: (210) 677-0354 • Fax: (866) 913-3977
Customer Service: (800) 880-6528
www.bme-tx.com • email: bme@bme-tx.com
†U.S. Patent No. 7,240,677. Additional patents pending.
FDA Cleared. CE Marked, UL Certified for United States and International distribution.